

## **EVPRNN Development**

- **New version of EVPRNN (v14) installed at MPE in Feb.**
- **New version includes PSD-II and ToF-VI algorithms. (No need for a two-step process using EVPTPC.)**
- **EVPRNN v14 reads module status table to check for the configuration required by the TCC data (Georg's ToF correction coefficients).**
- **EVPRNN v14 now requires module status table to be up-to-date.**
- **EVPRNN v15 uses last entry of module status table if there is no entry for the day being processed. (This is consistent with the approach used at UNH for burst and ToO processing.)**
- **EVPRNN v15 placed in production at UNH in April, but never placed in production at MPE.**
- **Task EVPRNO was set up at MPE for continued processing of QF 131 datasets (ToF-II and PSD-I corrections).**
- **Need for ToF-VII algorithm????**

## Current Processing

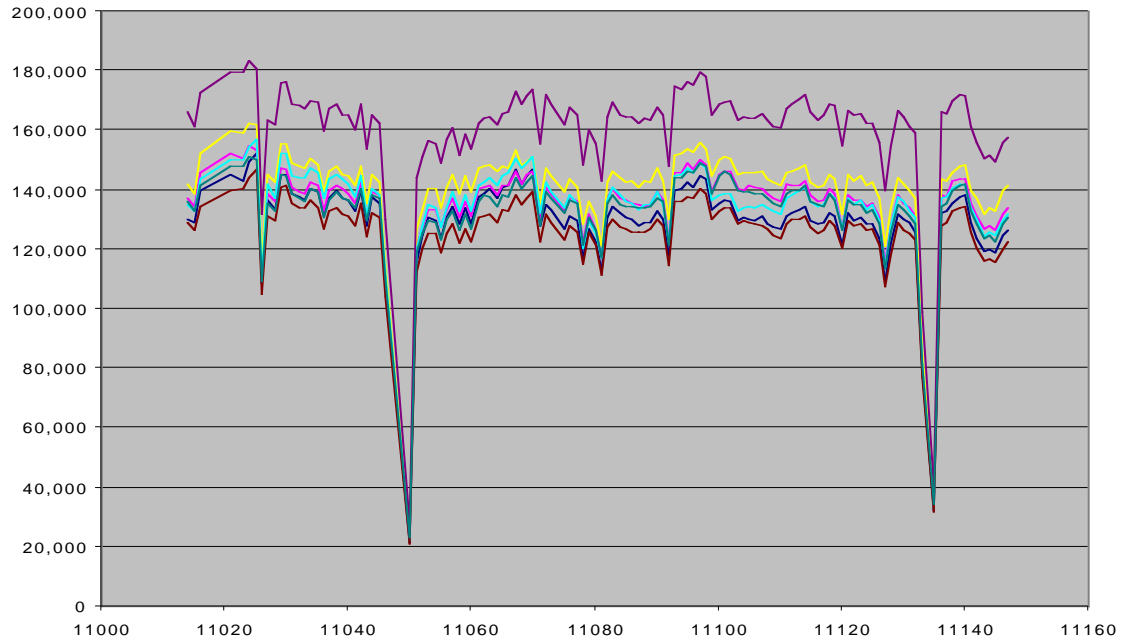
- **QF 131 : Includes ToF-II and PSD-I corrections. These data generated by EVPRNO (copy of EVPRNN v13).**
- **QF 134 : Includes ToF-VI and PSD-II corrections. These data generated by EVPRNN (v14/15).**
- **Current processing of new data :**
  - **EVPRNN generates QF 134 data ( $\gamma$ -1 and  $\gamma$ -2).**
  - **EVPRNO generates QF 131 data ( $\gamma$ -1 only).**
- **Current re-processing of old data :**
  - **EVPRNN generates QF 134 data (phase 1-6,  $\gamma$ -1 only).**
- **Net result will be :**
  - **Complete set of QF131 data for  $\gamma$ -1 (up to ????)**
  - **Complete set of QF134 data for  $\gamma$ -1**
  - **QF 131 data for  $\gamma$ -2, phase 1-6**
  - **QF 134 data for  $\gamma$ -2, starting with phase 7**

## *Processing Checks*

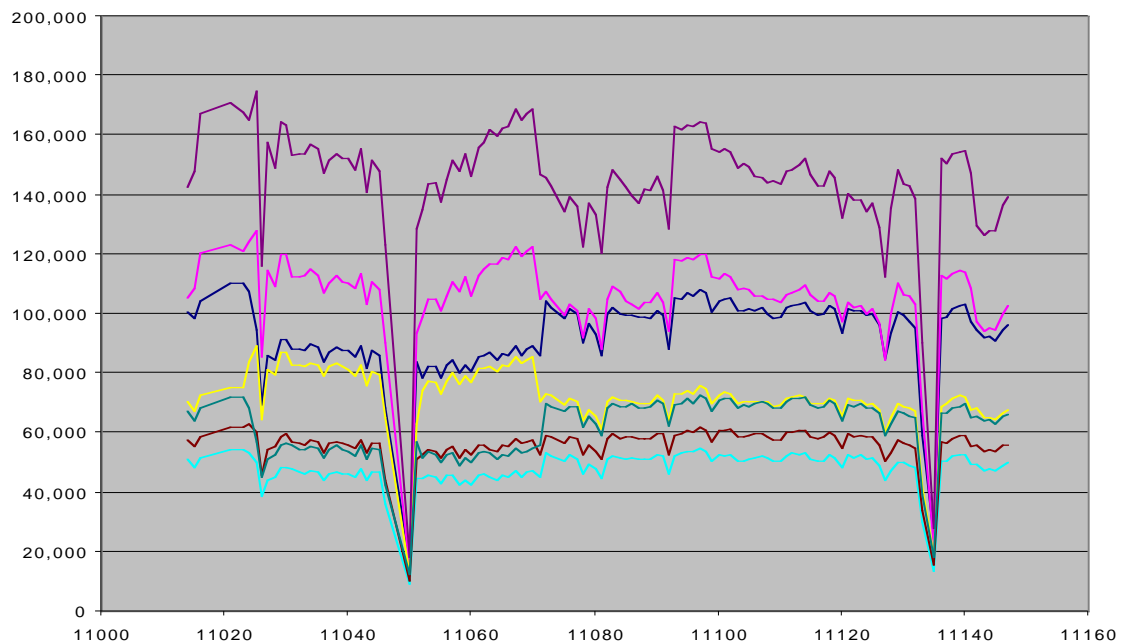
- **Current processing checks require no data transfers to UNH.**
- **Processing results (log files, ESR data files) are placed in `proc_archiv` directory at MPE.**
- **Twice a week, scripts are run (as cron jobs) to generate reports based on the content of the `proc_archiv` area.**
- **These reports are automatically e-mailed to UNH.**
- **The reports are automatically made available on the COMPASS web page.**
- **The reports are reviewed every week or two and used to update the EVP quality flags.**
- **These reports contain detailed statistical information (counts per module, percentage of processed events, etc.) that can be readily accessed via EXCEL spreadsheets.**

# Phase 7 Processing

D1 Module Event Sums - Phase 7

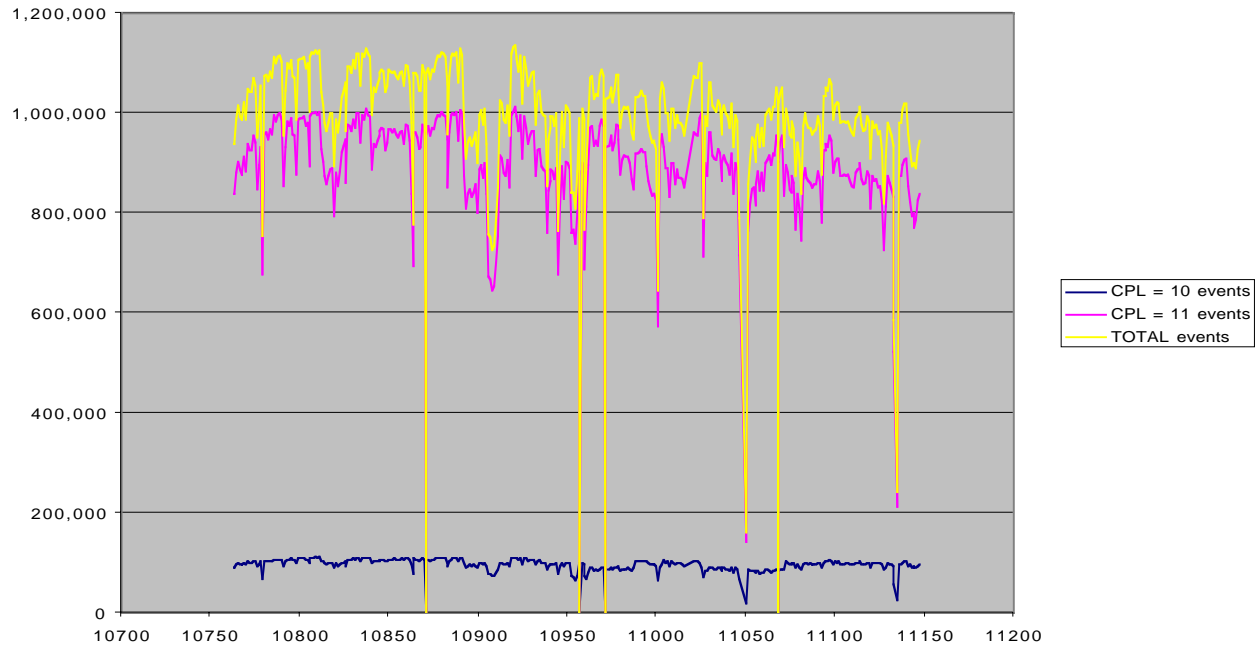


D2 Module Event Sums - Phase 7

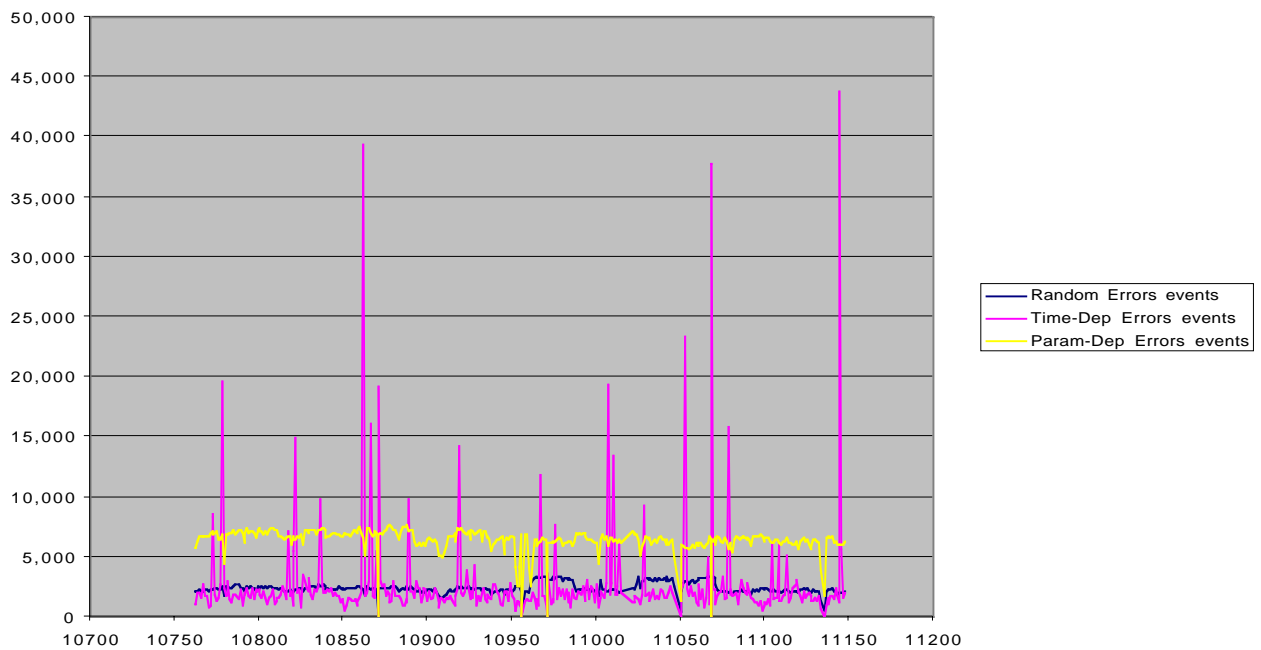


# Phase 7 Processing

EVP Statistics - Phase 7



EVP Statistics - Phase 7



## *EVP Processing Status*

- Reports are accessible from the COMPASS User's Page:

[http://wwwgro.unh.edu/comptel/compass/compass\\_users.html](http://wwwgro.unh.edu/comptel/compass/compass_users.html)

- As of January 27, the latest day processed at MPE was January 12 (TJD 11190, VP 802).
- As of January 27, the processing checks for Phase 7 are nearly complete.